

2021-2022

ANNUAL REPORT



董事長報告

LETTER FROM THE BOARD CHAIR

I have had the privilege of serving on the Morrison Academy Board of Trustees for 11 years. My first board meeting was in Kaohsiung where, after a great deal of discussion and prayer, the Board voted to authorize “the addition of grades ten through twelve on the Kaohsiung and Taipei campuses of Morrison Academy.” This was a significant step of faith since we were not really sure where we would find adequate space to accomplish this task in Taipei. A great deal has changed since then.

Not only did the Lord provide a great location for a beautiful campus in Linkou, He also has provided the resources necessary to help offset other financial burdens through the sale of the Bethany campus. In addition to the new Taipei campus, we have seen extra space added to the Kaohsiung campus to accommodate the high school, a satellite campus in Chiayi, and now the upcoming Taichung high school and auditorium rebuild. We praise God that He has been and will continue to provide these spaces. Construction can be a bit inconvenient, so thank you for your patience.

Even though these campuses possess a great deal of potential, they are really only land and buildings. The vision for every student to experience a quality, biblically-integrated education is only achieved through exceptionally high-caliber, Christ-centered staff. Even with the frustrations and challenges that Covid has caused over the past couple of years, Morrison staff have shown incredible flexibility and adaptability during some rather fluid situations. Thankfully, the government restrictions have been relaxing so that classes, concerts, plays and other events can be held in person, and we expect restrictions to continue to relax. Any school’s greatest asset must be its staff, and this is certainly true for Morrison Academy. Compared to other similar schools throughout Asia, our annual staff retention



rate is quite high. Next year's turnover is higher, mainly due to families being at different stages in life and returning to their home countries. This did not come as a surprise to the administration, and they have been diligently interviewing candidates that the Lord is going to provide for each position. He has always provided the right people at the right time.

The Board is certainly pleased that the Lord has provided Mrs. Julie Heinsman as superintendent. This is her second year in this position, and the quote from her interview, "I bleed Morrison," continues to ring true. A deep commitment to see students impact the world dynamically for Christ is evident through her dedication to support administration, teachers and the Board. Mrs. Heinsman has also been able to continue cultivating relationships with like-minded Heads of School from other parts of the world in order to glean ideas for best practice and innovation.

Morrison Academy has a lot for which to be thankful. We have been blessed with a strong administration, godly staff and respectable facilities. We look forward to seeing what the Lord has in store for our school system in the future.

Mark Dinnage
Morrison Board Chair
董事長

MAP TESTS

MATH (FALL)

GRADE	M	EARCOS*	US NORM
1	174	173	160
2	189	187	175
3	201	199	188
4	210	211	200
5	221	222	209
6	226	228	215
7	236	236	220
8	245	245	225

MATH (SPRING)

GRADE	M	EARCOS	US NORM
1	189	187	176
2	207	200	189
3	212	210	201
4	221	223	211
5	234	232	219
6	231	236	223
7	244	244	227
8	252	252	230

READING (FALL)

GRADE	M	EARCOS	US NORM
1	169	164	156
2	182	181	172
3	199	195	187
4	205	204	197
5	214	211	204
6	220	217	210
7	224	222	214
8	230	227	218

READING (SPRING)

GRADE	M	EARCOS	US NORM
1	187	177	171
2	N/A	191	186
3	208	202	197
4	213	210	205
5	220	216	211
6	224	221	215
7	228	225	218
8	235	230	222

LANGUAGE (FALL)

GRADE	M	EARCOS	US NORM
2	186	186	174
3	201	196	188
4	206	201	197
5	214	207	204
6	219	212	209
7	225	216	213
8	228	221	216

LANGUAGE (SPRING)

GRADE	M	EARCOS	US NORM
2	196	195	188
3	211	204	198
4	213	212	205
5	221	217	210
6	225	222	214
7	230	226	216
8	236	230	219

*East Asia Regional Council of Overseas Schools (EARCOS)

SAT TESTS

EBRW**

MORRISON	625
US NORM	533

MATH

MORRISON	671
US NORM	528

CUMULATIVE / TOTAL

MORRISON	1297
US NORM	1060



**Evidence-Based Reading & Writing

大學錄取榜單

ACCEPTANCE OF MORRISON GRADUATES

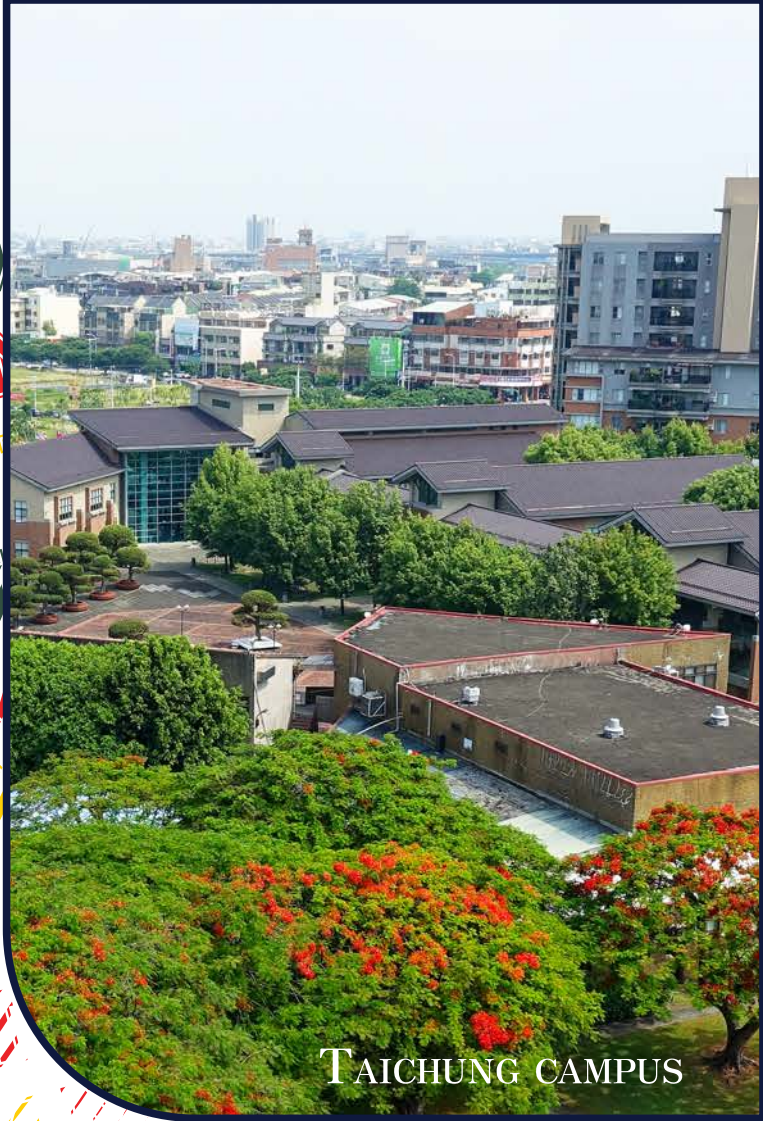
ANGELO STATE UNIVERSITY
APPALACHIAN STATE UNIVERSITY
ARIZONA STATE UNIVERSITY
ASBURY UNIVERSITY
AZUSA PACIFIC UNIVERSITY
BAYLOR UNIVERSITY
BELHAVEN UNIVERSITY
BOISE STATE UNIVERSITY
BOSTON UNIVERSITY
BUTLER UNIVERSITY
CALIFORNIA BAPTIST UNIVERSITY
CALIFORNIA COLLEGE OF THE ARTS
CALIFORNIA POLY POMONA
CALVIN COLLEGE
CASE WESTERN RESERVE UNIVERSITY
CEDARVILLE UNIVERSITY
CHINESE UNIVERSITY OF HONG KONG
CITY UNIVERSITY OF HONG KONG
COLLEGE OF THE OZARKS
COLUMBIA COLLEGE
COVENANT COLLEGE
DE ANZA COLLEGE
DREXEL UNIVERSITY
ELON UNIVERSITY
EMORY UNIVERSITY
FLORIDA INSTITUTE OF TECHNOLOGY
FLORIDA STATE UNIVERSITY
FORDHAM UNIVERSITY
GEORGE FOX UNIVERSITY
GEORGE MASON UNIVERSITY
GRAND CANYON UNIVERSITY
HUMBOLT UNIVERSITY
INDIANA WESLEYAN UNIVERSITY
INTERNATIONAL CHRISTIAN UNIVERSITY JAPAN
JOHN BROWN UNIVERSITY
JOHNS HOPKINS UNIVERSITY
KENDALL COLLEGE OF ART AND DESIGN
LEE UNIVERSITY
LIBERTY UNIVERSITY
LOYOLA MARYMOUNT UNIVERSITY
MARYVILLE UNIVERSITY
MCMURRY UNIVERSITY
MICHIGAN STATE UNIVERSITY
MIDWESTERN STATE UNIVERSITY
MINNESOTA STATE UNIVERSITY OF MANKATO
MISSISSIPPI COLLEGE
MISSOURI SOUTHERN STATE UNIVERSITY
MISSOURI STATE UNIVERSITY
NATIONAL TAIWAN UNIVERSITY
NEW YORK UNIVERSITY ABU DHABI
NORTH ARIZONA UNIVERSITY
NORTH CAROLINA STATE UNIVERSITY
NORTH GREENVILLE UNIVERSITY
NORTHEASTERN UNIVERSITY
NORTHERN ARIZONA UNIVERSITY
OHIO STATE UNIVERSITY
OKLAHOMA BAPTIST UNIVERSITY
OREGON STATE UNIVERSITY
OUACHITA BAPTIST UNIVERSITY
PENN STATE UNIVERSITY
PEPPERDINE UNIVERSITY
PRATT INSTITUTE
PURDUE UNIVERSITY
RENSSELAER POLYTECHNIC INSTITUTE
RICE UNIVERSITY
ROGER WILLIAMS UNIVERSITY
RUTGERS UNIVERSITY - NEW BRUNSWICK
SANTA CLARA UNIVERSITY
SAVANNAH COLLEGE OF ART AND DESIGN
ART INSTITUTE OF CHICAGO
SCHOOL OF VISUAL ARTS
SEATTLE PACIFIC UNIVERSITY
SOPHIA UNIVERSITY - JAPAN
SOUTHEASTERN UNIVERSITY
ST. LOUIS UNIVERSITY
STONY BROOK UNIVERSITY
SYRACUSE UNIVERSITY
TACCOA FALLS UNIVERSITY
TEXAS TECH
TREVCCA UNIVERSITY
UNIVERSITY OF ARIZONA
UNIVERSITY OF CALIFORNIA - BERKELEY
UNIVERSITY OF CALIFORNIA - DAVIS
UNIVERSITY OF CALIFORNIA - IRVINE
UNIVERSITY OF CALIFORNIA - LA
UNIVERSITY OF CALIFORNIA - MERCED
UNIVERSITY OF CALIFORNIA - RIVERSIDE
UNIVERSITY OF CALIFORNIA - SAN DIEGO
UNIVERSITY OF CALIFORNIA - SANTA BARBARA
UNIVERSITY OF CALIFORNIA - SANTA CRUZ
UNIVERSITY OF CONNECTICUT
UNIVERSITY OF DENVER
UNIVERSITY OF FLORIDA
UNIVERSITY OF HOUSTON
UNIVERSITY OF IDAHO
UNIVERSITY OF ILLINOIS - URBANA-CHAMPAIGN
UNIVERSITY OF ILLINOIS
UNIVERSITY OF IOWA
UNIVERSITY OF MANCHESTER
UNIVERSITY OF MARY HARDIN-BAYLOR
UNIVERSITY OF MARYLAND
UNIVERSITY OF MASSACHUSETTS - AMHERST
UNIVERSITY OF MIAMI
UNIVERSITY OF MOBILE
UNIVERSITY OF NORTH CAROLINA
UNIVERSITY OF NORTHWESTERN - ST. PAUL
UNIVERSITY OF OREGON
UNIVERSITY OF PITTSBURGH
UNIVERSITY OF ROCHESTER
UNIVERSITY OF SOUTHERN CALIFORNIA
UNIVERSITY OF TAMPA
UNIVERSITY OF TEXAS - ARLINGTON
UNIVERSITY OF TORONTO
UNIVERSITY OF UTAH
UNIVERSITY OF VIRGINIA
UNIVERSITY OF WASHINGTON
UNIVERSITY OF WISCONSIN - MADISON
UNIVERSITY OF ARIZONA
VASSAR COLLEGE
VIRGINIA POLYTECHNIC INSTITUTE
WAKE TECH COMMUNITY COLLEGE
WASHBURN UNIVERSITY
WESTERN CAROLINA UNIVERSITY
WHEATON COLLEGE
WILLIAM CAREY UNIVERSITY
WILLIAMS BAPTIST UNIVERSITY
YORK UNIVERSITY

TAIPEI CAMPUS



CHIAYI CAMPUS





TAICHUNG CAMPUS

馬禮遜美國學校
**MORRISON
ACADEMY**
JOHN 8:32



KAOHSIUNG CAMPUS



PARENT & STUDENT SURVEY DATA

PARENTS 家長問卷資料

*average percent of agreement

83% Teachers are generally available to help my child.
老師們通常有時間幫助我的孩子。

81% I am pleased with the quality of teaching at Morrison.
我很滿意馬禮遜學校的教學品質。

83% Staff at the school work well together to improve student learning.
學校教職員彼此合作，以促進學生學習。

80% The teachers do a good job teaching and thoroughly understand what they are teaching.
老師們教得很好，也完全明白他們所教的內容。



STUDENTS 學生問卷資料

*average percent of agreement

81%

My teachers teach in different ways to help me learn.

我的老師以不同方式教導我學習。

81%

When I have a need or question at school, I can turn to the staff for help.

當我在學校有需要或有問題時，我可以請教職員幫忙。

79%

My teachers make it clear what I'm supposed to learn.

我的老師們很清楚地說明我應該學會什麼。

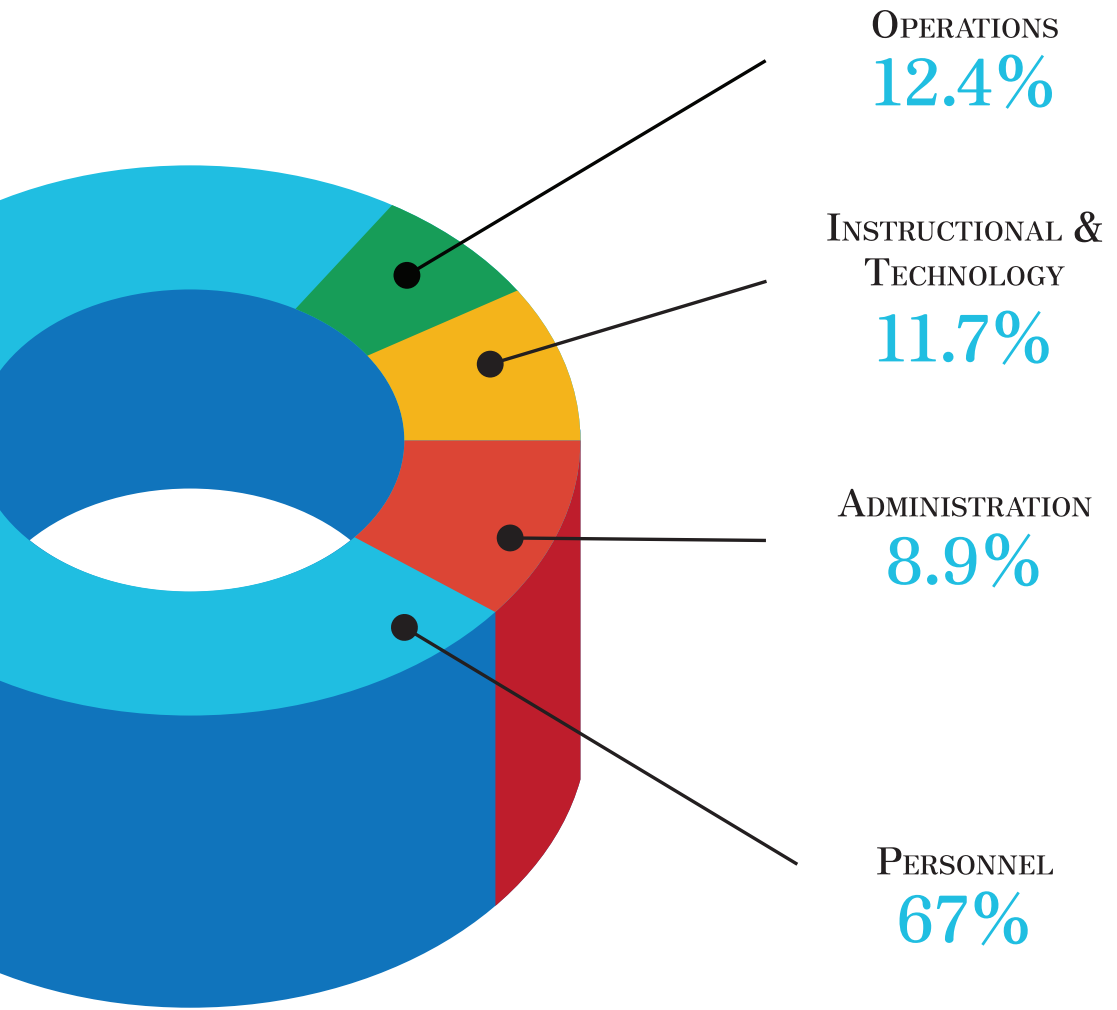
80%

My teachers do a good job teaching and thoroughly understand what they are teaching.

我的老師們教得很好，也完全了解自己所教的內容。

FINANCIAL REVIEW 財務回顧

OPERATING EXPENSES



學生及教職員統計資料

STUDENT & STAFF PROFILE*

STUDENT NUMBERS

Total **953**

Taipei **286**

Chiayi **21**

Taichung **385**

Kaohsiung **261**

 50%

US **61%**

South Korea **5%**

 50%

Canada **10%**

Other **24%**

STAFF NUMBERS

Total **199**

US **64%**

Taiwan **16%**

Canada **9%**

Other **11%**

Bachelor's **87**

Master's **100**

Doctorate **3**

*as of January 2022





www.ma.org.tw